

FOR KIM - 1958 - 1990

C^{add} *D-7¹¹/C* *D-7/C* *C^{sus} 1-*

STAR LIGHT STAR Bright

#11 C7-9 *C7¹³ 9 #11*

See your face A

A-7¹¹ *B^b7/D* *B^b7¹¹* *C6^{#11}*

Million smiles wealth of wiles

D-6⁹ *CΔ7* *G^{sus}* *F^{sus}*

YOU live WITH IN OUR hearts

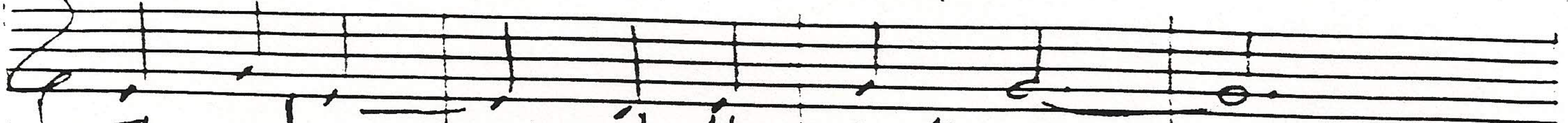
E-7(11) *C* *C7^{sus}* *D*

where light WAS lit she travelled farth

FA7

Dsus9

CA79



The Angels

smiles their greetings

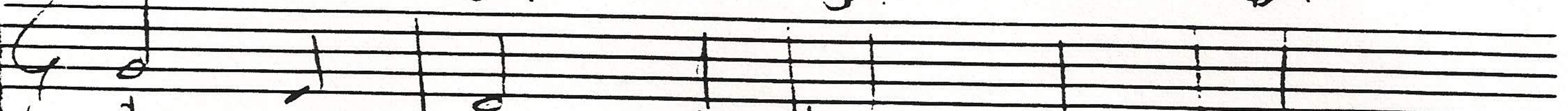


add C9

G-7

F-7

D9



When she

died

The

ocean

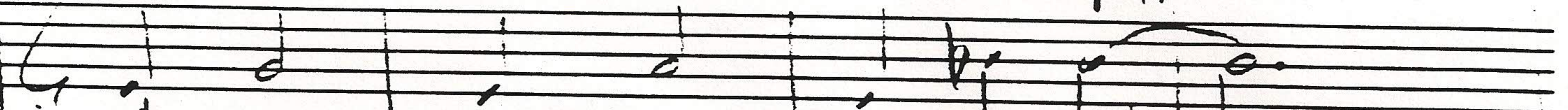
cried



G7/B

CA7

F#7#11



she graced

our lives

starlight bright

